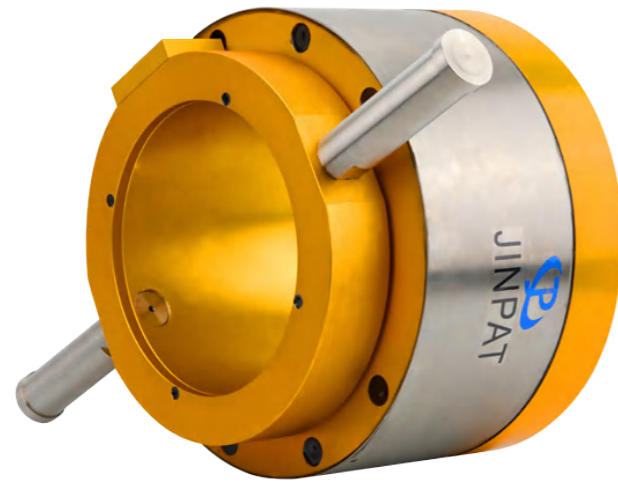


Construction Machinery Slip Rings



Electrical & Electronics		Mechanical		Enviromental	
Number of circuits	12CKT	Rotating speed	0~100rpm	Temperature	-30°C~+80°C
Current	4×30A+2×10A+3×5A+4×CANBUS+1×Throttle signal	Contact material	Precious metal	Humidity	≤95%RH
Voltage	36VDC	Housing material	Aluminum alloy	Protection Grade	67
Dielectric strength	≥500VAC@50Hz	Wire type	4.0/2.0/0.75mm ² FLRY-B/CANBUS	Others	
Insulation resistance	≥500MΩ@500VDC	Wire length	Stator side:3500mm Rotor side:1500mm		

Features

- Simultaneous transmission of power and signal
- Large through-bore design
- Standard installation, protection grade IP67
- Maintenance-free

Advantages

- Excellent water-proof performance, protection grade up to IP67, fits to work in outdoor environment
- Multiple channels for power, general signals, throttle signal and CANBUS signal, etc.
- Meet the requirements of crane models with 12T~350T lifting capacity
- Large through-bore series, bore diameter 200mm

Construction Machinery	
Model	Applications
LPT200-0430-0210-06S	100T All terrain crane

Outline drawings

